



GLC Foyer and Inner Courtyard Information on use

The GLC Foyer with the Inner Courtyard is an attractive event venue that can be reserved for various occasions.

To apply for a reservation, please contact the Facility Services staff in the ET building area. Please note that all events in the GLC Foyer require permits, and the permit application must be submitted via the [Servix](#) online portal.

We recommend that you reserve well in advance to ensure that the room is available and that all organisational requirements can be taken into account.

General

Location	Gloriastrasse 37/39, 8092 Zurich.	
Building area and reservations	ET ETZ E60.1 Gloriastrasse 35 8092 Zurich +41 44 632 40 67 fs_info_gmz_et@ethz.ch ethz.ch/facility-services	
Room sizes	Foyer:	358 m ² usable area
	Inner Courtyard:	502 m ² total area
	Restaurant:	170 m ² usable area
	Number of participants:	maximum of 400 persons

Conditions for use

Permitted use

The GLC Foyer is a versatile venue that is ideal for conferences and other events. With its modern facilities and spacious rooms, the GLC Foyer offers numerous options for organising events such as poster sessions, displays of exhibits, registrations, small and large drinks receptions, and coffee breaks.

For special events, the bar/lounge area of the restaurant can be used by prior arrangement with SV (Switzerland) Ltd, remembering that lunchtime business will be ongoing. Dinners with waitperson service can also be organised in the restaurant in the evening.

Please note that the event must take place in compliance with [ETH Zurich's Regulations on the Use of Premises](#).

Furniture and inventory

To ensure that your event in the GLC Building proceeds smoothly, it is important to order the inventory in good time.

Please email your order to the Facility Services department at fs_info_gmz_et@ethz.ch. Exhibition elements or decorations must not obstruct the visibility of the escape route signs/markings. The escape and rescue routes as well as the emergency exit doors must be kept clear at all times.

Power connections

Sockets for electrical distribution boards are available in the GLC Foyer. Their use must be agreed with the Facility Services department.

Fire regulations

The fire regulations and fire protection requirements for the GLC Building must be respected. The escape routes must be kept clear at all times.

Waste disposal and cleaning

The GLC Foyer must be left in a clean condition. The event organiser is responsible for disposing of waste.

For correct disposal, contact the Facility Services department: fs_info_gmz_et@ethz.ch.

Adhesive tapes are not permitted on walls and floors.

Expenses for cleaning and services that exceed the usual scope will be invoiced to the event organiser as additional services, as per the price list.

Signage and route guidance

It is prohibited for users themselves to affix signs to floors and walls. For route guidance and/or signage in the indoor area of the GLC, contact the Facility Services department: fs_info_gmz_et@ethz.ch.

Noise emissions, music, microphones

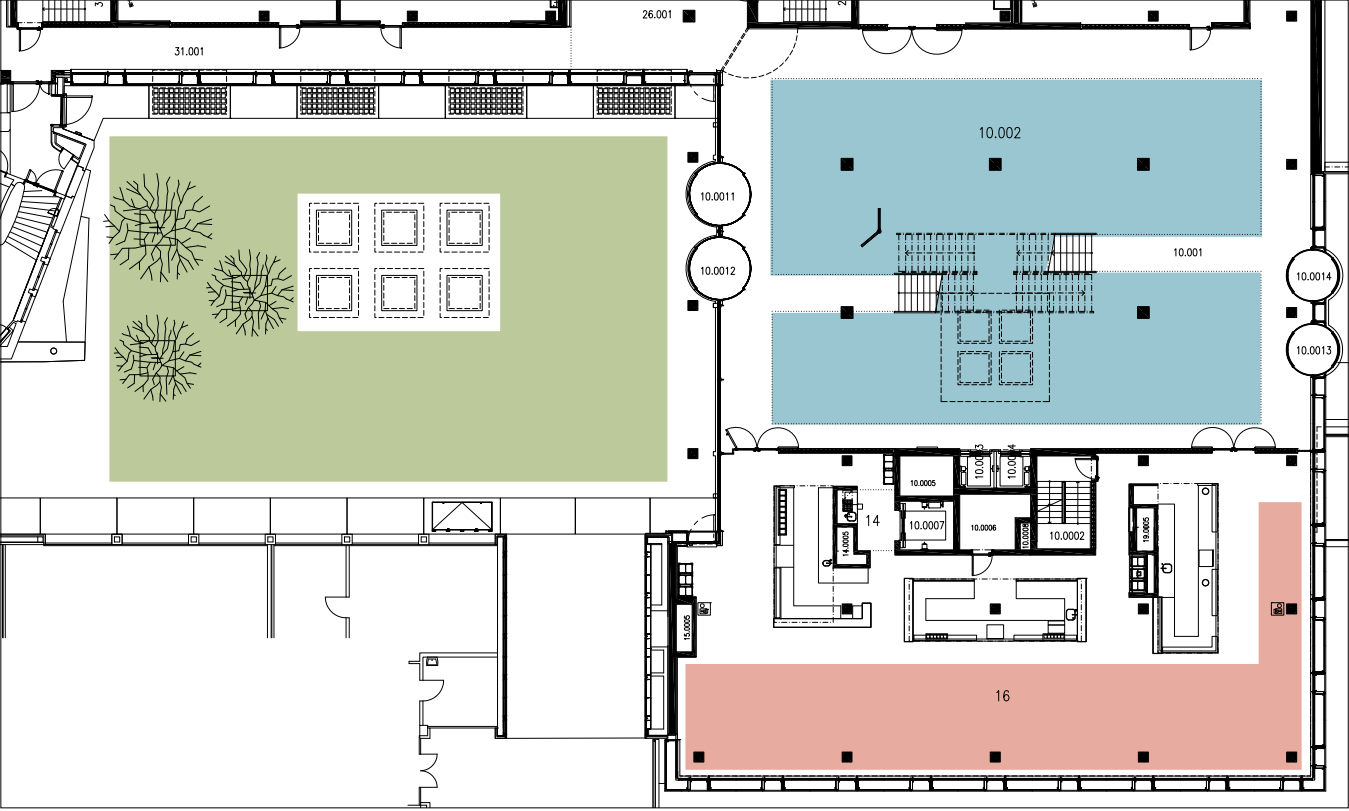
Noise emissions must be reduced to a minimum. Consideration must be shown for people in the surrounding premises. Playing music and using microphones are not allowed without consulting the Permits Office.

Barrier-free

The GLC Foyer is barrier-free and has good wheelchair access. From the Gloristrasse tram stop, a path without steps leads directly to the Foyer, which is on the same level as the restaurant; there is also a barrier-free toilet for wheelchair users on the same level. Disabled parking spaces are available in the underground car park of the ETZ Building. From there, barrier-free access to the GLC Foyer is ensured via the Inner Courtyard.

Please note that the Inner Courtyard is paved with cobblestones.

Plans



Usable areas:

- GLC Inner Courtyard, approx. 502 m²
- GLC Foyer, approx. 358 m²
- GLC Restaurant, approx. 170 m²

Illustrations



Photo of Foyer: © ETH Zurich

View of the Foyer



View of the Inner Courtyard



Photos of Inner Courtyard and Restaurant: © Kuster Frey

View of the Restaurant

ETH Zurich
Campus Services department
Permits
Binzmühlestrasse 130
8092 Zurich

Tel.: +41 44 633 25 18
bewilligungen@ethz.ch

ethz.ch/eventorganisation

Photos: ETH Zurich, Kuster Frey

© ETH Zurich, December 2024