

# HPH Foyers Information on use

## General






<b>Location</b>	ETH Hönggerberg, Joseph-von-Deschwanden-Platz 1, 8093 Zurich
<b>Room sizes</b>	<p> <b>HPH D Hall 1:</b> 70 m<sup>2</sup> / 100 persons  <b>HPH D Hall 2:</b> 212 m<sup>2</sup> / 275 persons  <b>HPH D Hall 3:</b> 141 m<sup>2</sup> / 190 persons  <b>HPH D Hall 4:</b> 141 m<sup>2</sup> / 190 persons  <b>HPH D Hall 5:</b> 313 m<sup>2</sup> / 400 persons  <b>HPH D Hall 6:</b> 110 m<sup>2</sup> / 145 persons                 </p> <p><b>Total HPH D Halls 1 – 6:</b> 1,300 persons</p> <p><b>HPH G “Bridge”:</b> Maximum of 240 persons                      For events with over 100 persons, we recommend the use of a hall on D Floor.</p>
<b>Reservations</b>	<p><b>HPH Foyers on D Floor:</b> These are managed by the Academic Services Room and Course Scheduling team: <a href="mailto:raumreservation@ethz.ch">raumreservation@ethz.ch</a></p> <p><b>HPH Foyer “Bridge” G Floor:</b> Please send reservation enquiries to the Facility Services department: <a href="mailto:fs_info_gmh_hp@ba.ethz.ch">fs_info_gmh_hp@ba.ethz.ch</a></p>
<b>Permits</b>	Applications for events requiring permits must be submitted in advance, using the form.

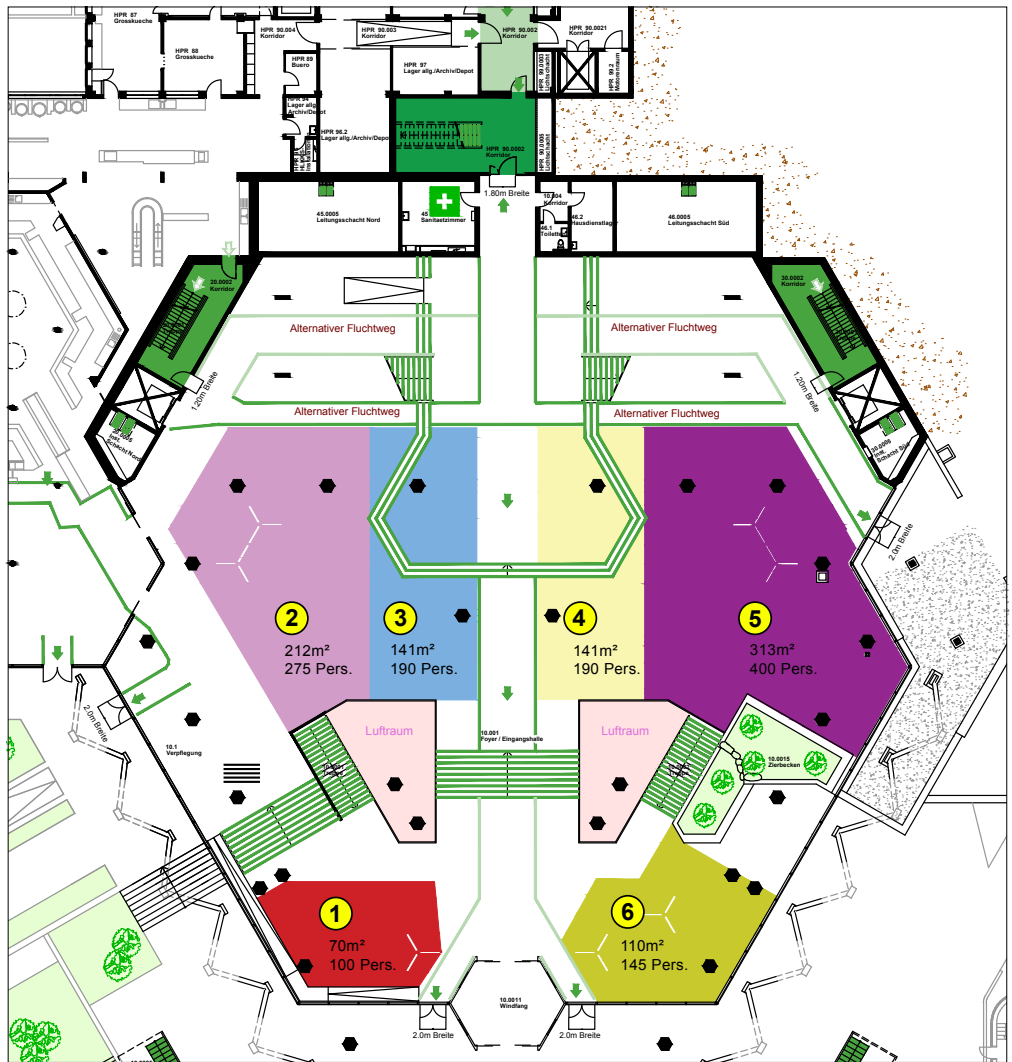
## Conditions for use

<b>Permitted use</b>	The HPH Foyers are ideal complementary spaces for conferences or other events, and they are suitable for poster sessions, exhibits, registration, smaller and larger drinks receptions, and also coffee breaks.
<b>Furniture, inventory</b>	Inventory must be ordered well in advance from the Facility Services department, by emailing <a href="mailto:fs_info_gmh_hp@ba.ethz.ch">fs_info_gmh_hp@ba.ethz.ch</a> . Inventory not provided by the Facility Services department requires a special permit. Exhibition elements or decorations must not obstruct the visibility of the escape route signs/markings.
<b>Catering</b>	ETH Zurich catering partners are permitted, as well as external catering providers contracted by the event organiser. It is prohibited to prepare hot food, and equipment to keep food warm must only be powered by electricity.
<b>Power connections</b>	There are seven CEE 63A sockets for electrical distribution boards on HPH D Floor. Their use must be agreed with the Facility Services department.
<b>Fire regulations</b>	The fire regulations and fire protection requirements for the HPH Building must be respected. Escape routes must be kept clear at all times. (See the escape route plan on pages 3 and 4).
<b>Waste disposal, cleaning</b>	The HPH Foyers must be left in a clean condition. The event organiser is responsible for disposing of waste. No adhesive tapes must be used on walls or floors. Expenses for cleaning and services that exceed the usual scope will be invoiced to the event organiser as per the price list for additional services.
<b>Signage, route guidance</b>	It is prohibited for users themselves to affix signs to floors and walls. For route guidance and/or signage in the indoor area of the HPH, contact the Facility Services department: <a href="mailto:fs_info_gmh_hp@ba.ethz.ch">fs_info_gmh_hp@ba.ethz.ch</a> .
<b>Noise emissions, music, microphones</b>	Consideration must be shown for people in the surrounding premises. Playing music and using microphones are not allowed without a special permit. A break chime is allowed.
<b>All-purpose room</b>	Room HPH C 10.1 can be reserved in addition to the HPH Foyers. With an area of 18.7 m <sup>2</sup> (maximum of 8 persons), it is suitable for use as a meeting or storage room, cloakroom and/or operational office. Please send reservation enquiries to the Permits Office: <a href="mailto:bewilligungen@services.ethz.ch">bewilligungen@services.ethz.ch</a>

# Plans

## Escape route plan HPH D Floor including floor area allocation

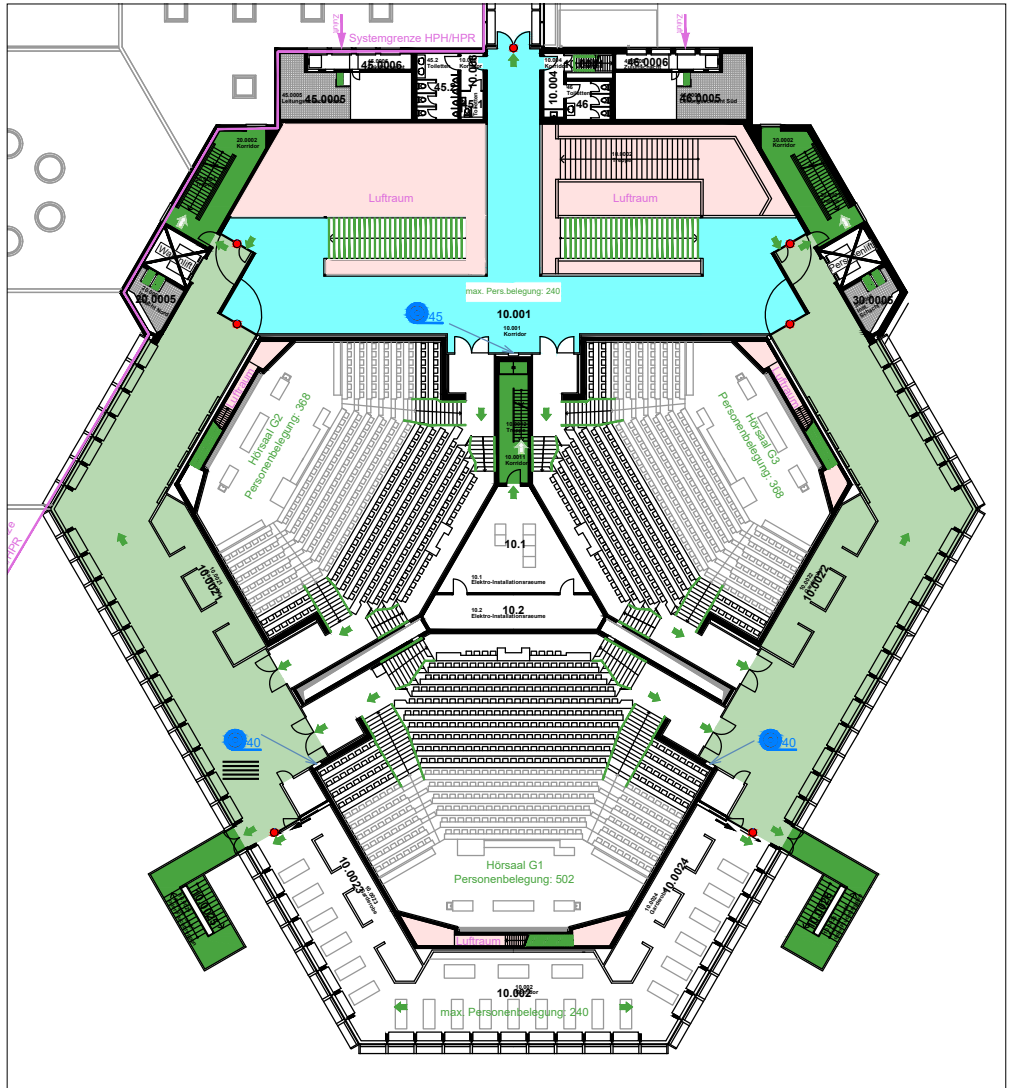
-  Vertical escape route
-  Horizontal escape route
-  Alternative escape route
-  Escape route that must be kept clear
-  Foyer areas that can be rented



# Plans

**Escape route plan  
HPH G Floor  
including the "Bridge" area  
(light blue)**

- Vertical escape route
- Horizontal escape route
- Alternative escape route
- Escape route that must be kept clear
- "Bridge" Foyer



ETH Zurich  
 Campus Services department  
 Permits  
 Binzmühlestrasse 130  
 8092 Zurich

Tel.: +41 44 633 25 18  
 bewilligungen@ethz.ch

[www.ethz.ch/bewilligungen](http://www.ethz.ch/bewilligungen)

© ETH Zurich, December 2024